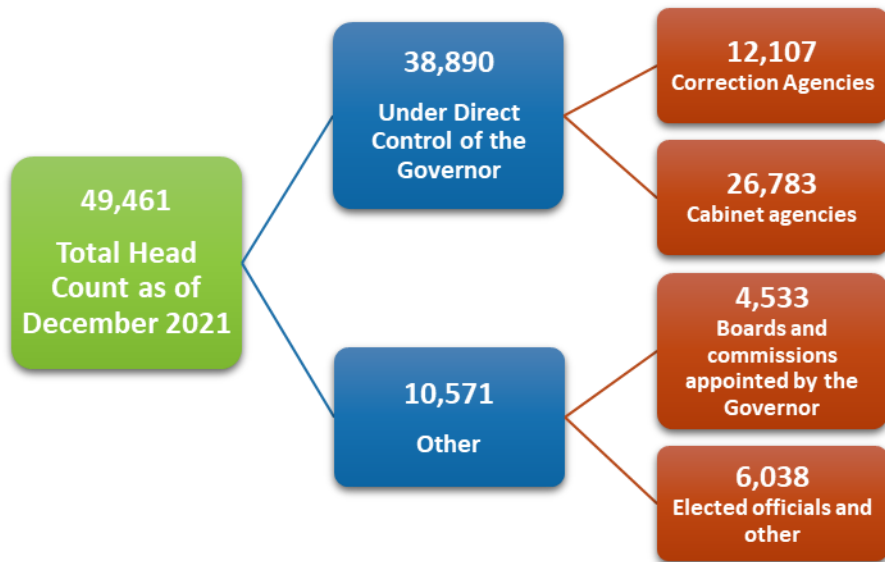




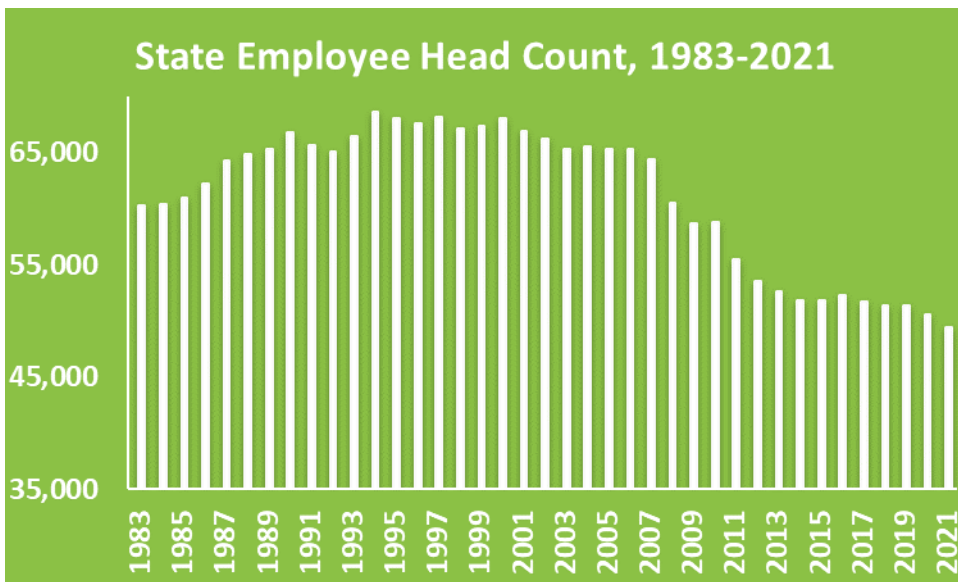
Legislative Budget Office of LSC

State Government Operating Expenses

July 2022



- ◇ The December 2021 head count of state employees was 49,461, the lowest count since 1983 and 27.9% lower than the highest count of 68,573 that was recorded in 1994.
 - ◆ 89.4% (44,207) of the 49,461 state employees were full-time permanent employees.
- ◇ For FY 2022, the state government’s operating expenses amounted to \$9.76 billion (10.8% of total state budget expenditures) across all funds:
 - ◆ \$5.46 billion (6.1%) for employee payroll, including both salaries and fringe benefits;
 - ◆ \$1.89 billion (2.1%) for purchased personal services; and
 - ◆ \$2.41 billion (2.7%) for supplies and maintenance and equipment.



State government’s operating expenses and their shares of total state budget expenditures, FY 2017-FY 2021 (\$ in billions)

Category	FY 2018	FY 2019	FY 2020	FY 2021
Total operating expenses	\$8.14 (11.7%)	\$8.41 (11.8%)	\$8.77 (11.7%)	\$9.17 (11.3%)
Payroll	\$4.72 (6.8%)	\$4.87 (6.9%)	\$5.08 (6.8%)	\$5.16 (6.4%)
Purchased personal services	\$1.57 (2.3%)	\$1.56 (2.2%)	\$1.66 (2.2%)	\$1.65 (2.0%)
Supplies, maintenance, & equipment	\$1.85 (2.7%)	\$1.98 (2.8%)	\$2.03 (2.7%)	\$2.35 (2.9%)

Data sources: Ohio Administrative Knowledge System; Ohio Department of Administrative Services